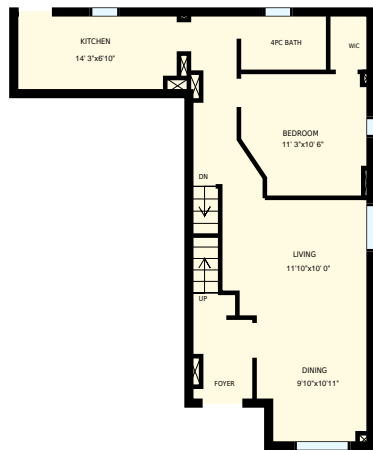


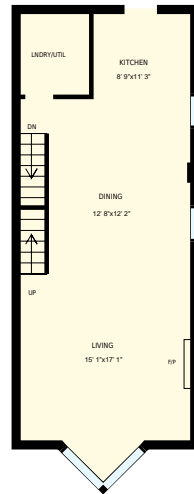


272 Berkeley St, Toronto, ON

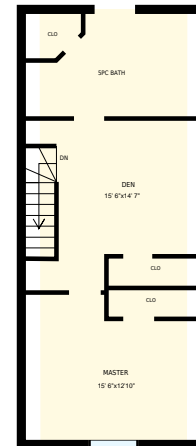
Total Exterior Area Above Grade 2014 sq. ft.



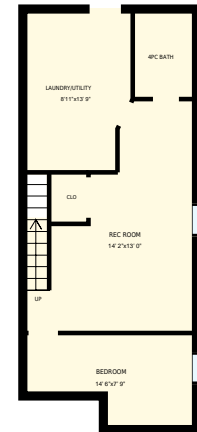
Main floor
Exterior Area 781 sq. ft.



2nd floor
Exterior Area 682 sq. ft.



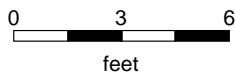
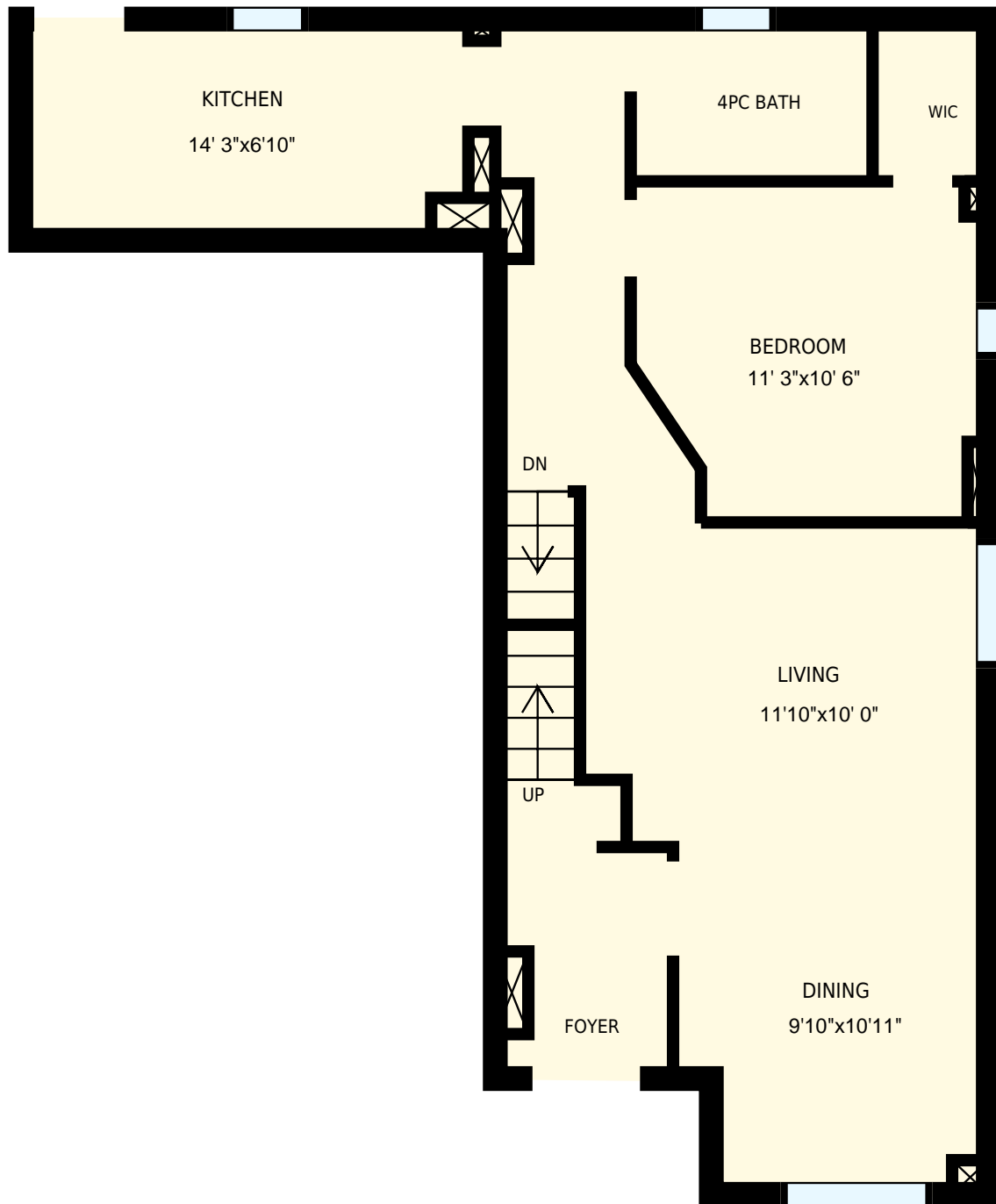
3rd floor
Exterior Area 551 sq. ft.



Basement

All room dimensions and floor areas must be considered approximate and are subject to independent verification. For method of measurement please see <https://yourguide.com/measure/>.

PREPARED FOR: Jen Tripp & Monika Janusz
Sales Representatives
HomeLife/Realty One Ltd

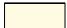


272 Berkeley St, Toronto, ON

PREPARED FOR:
Jen Tripp & Monika Janusz
Sales Representatives
HomeLife/Realty One Ltd

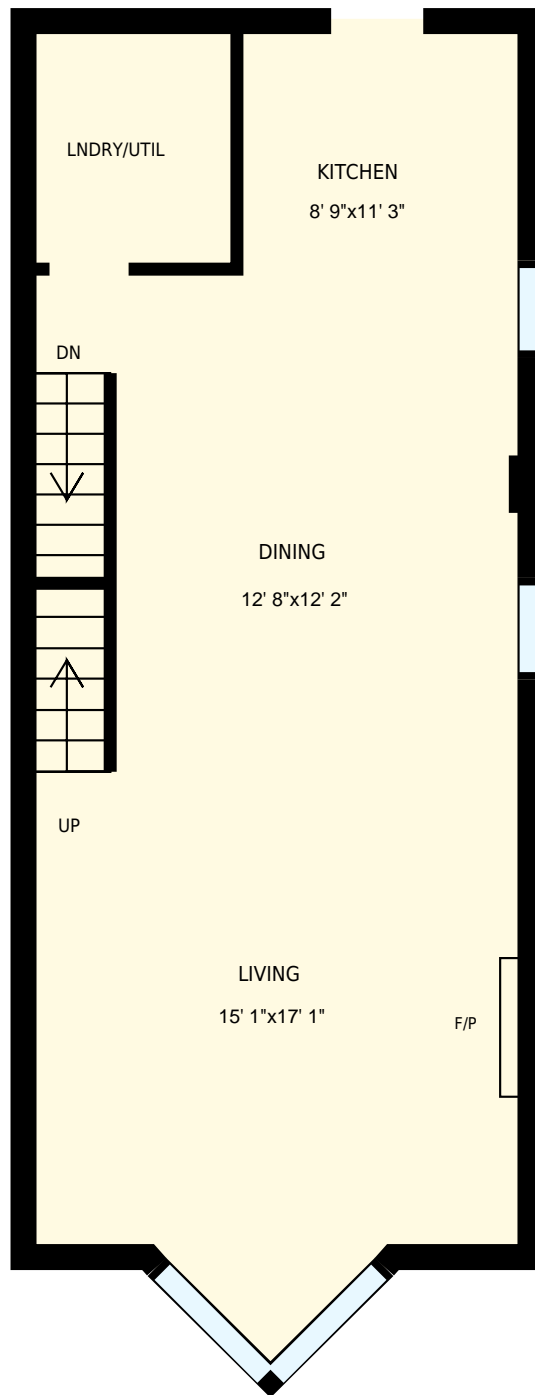
Main floor

Interior Area 648 sq. ft.
Exterior Area 781 sq. ft.

 Included Area

PREPARED ON:
May, 2017

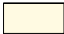
All room dimensions and floor areas must be considered approximate and are subject to independent verification.
For method of measurement please see <https://youriguide.com/measure/>.



272 Berkeley St, Toronto, ON

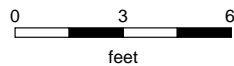
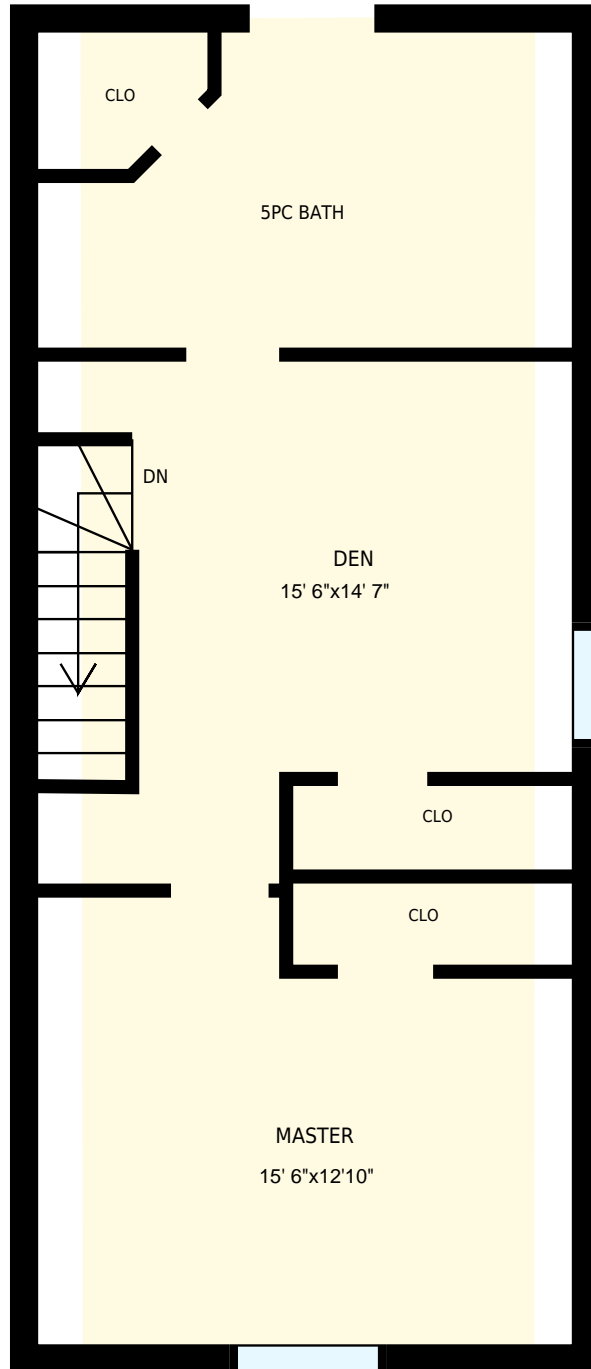
PREPARED FOR:
Jen Tripp & Monika Janusz
Sales Representatives
HomeLife/Realty One Ltd

Interior Area 576 sq. ft.
Exterior Area 682 sq. ft.

 Included Area

PREPARED ON:
May, 2017

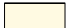
All room dimensions and floor areas must be considered approximate and are subject to independent verification.
For method of measurement please see <https://youriguide.com/measure/>.



272 Berkeley St, Toronto, ON

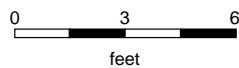
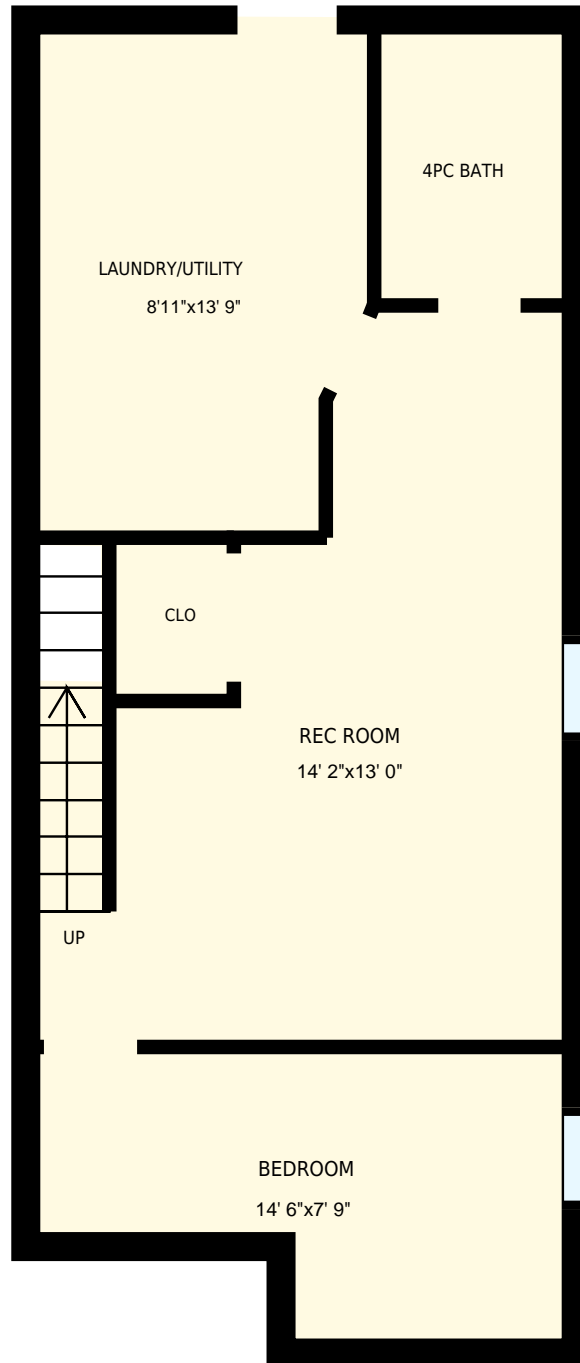
PREPARED FOR:
Jen Tripp & Monika Janusz
Sales Representatives
HomeLife/Realty One Ltd

Interior Area 454 sq. ft.
Exterior Area 551 sq. ft.

 Included Area

PREPARED ON:
May, 2017

All room dimensions and floor areas must be considered approximate and are subject to independent verification.
For method of measurement please see <https://youriguide.com/measure/>.

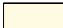


272 Berkeley St, Toronto, ON

PREPARED FOR:
Jen Tripp & Monika Janusz
Sales Representatives
HomeLife/Realty One Ltd

Basement

Interior Area 501 sq. ft.
Exterior Area

 Included Area

PREPARED ON:
May, 2017

All room dimensions and floor areas must be considered approximate and are subject to independent verification.
For method of measurement please see <https://youriguide.com/measure/>.